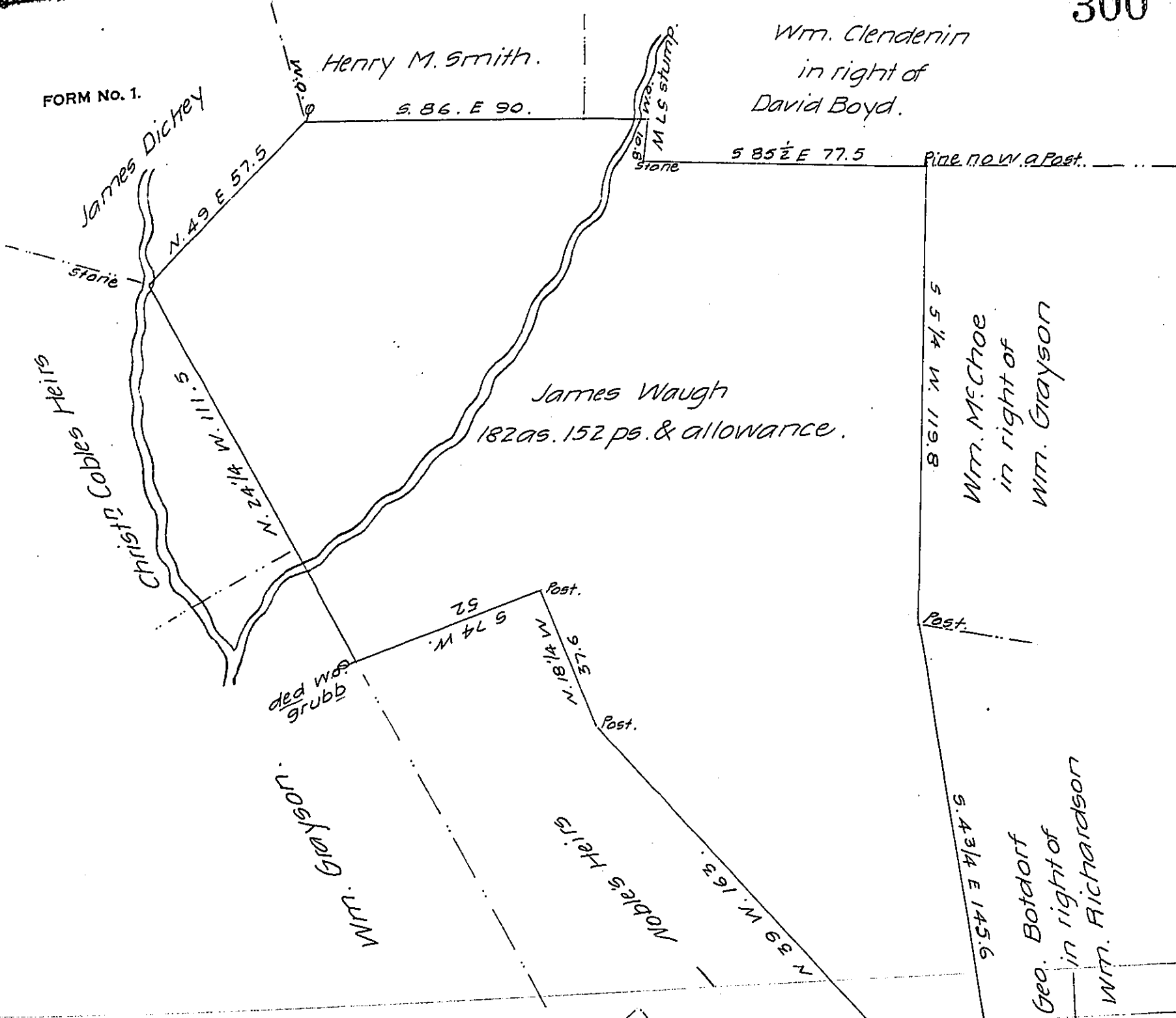


FORM No. 1.



Draught of a tract of land situate in East pennsboro township Cumberland County Cont^d 182 acres & 152 perches & allowance of six Pr. Ct. for roads &c. It being part of 248 acs 148 ps & allowance which being survd in pursuance of a Warrant granted to James Waugh dat^d July the 10th Anno Domini 1752. Survd and divid^d ed November the 3 Anno Domini 1822.

Sam^l Ruby D.S.

To Samuel Cochran Esquire
Surveyor General.

IN TESTIMONY that the above is a copy of the original remaining on file in the Department of Internal Affairs of Pennsylvania, made conformably to an Act of Assembly approved the 16th day of February 1833, I have hereunto set my hand and caused the Seal of said Department to be affixed at Harrisburg, this fifteenth day of September 1907

Henry Howard
Secretary of Internal Affairs.